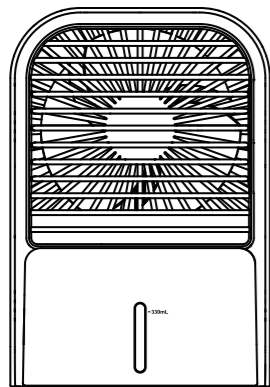


冰风加湿器风扇
说明书
尺寸：70x105mm
157g双铜纸

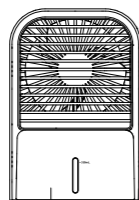


HomePro AirCooler

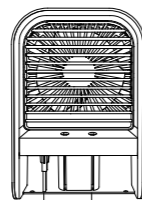


Product Description

Front View Front View w/out Water tank

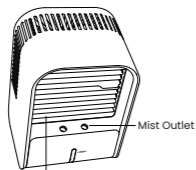


Water tank



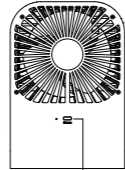
Cotton Swab
Probe

Top View



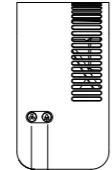
Wind Outlet

Back View



Charge Port

Lateral View



Fan Switch
Humidifier Switch

Function Description

Fan Switch (⊗)

Click to turn on the fan function:

Press the switch for the first time	Activates Low Wind setting
Press the switch for the second time	Adjusts to Medium Wind setting
Press the switch for the third time	Sets to High Wind setting
Press the switch for the fourth time	Turns Off fan

Humidifier Switch (⊕)

Click to turn on the humidifier function:

Press the switch for the first time	Activates Continuous Spray mode
Press the switch for the second time	Switches to Intermittent Spray mode
Press the switch for the third time	Turns Off spray mode

Probe Function

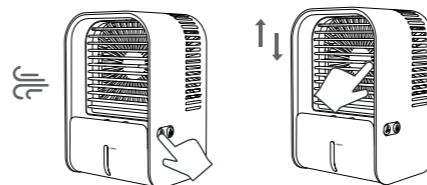
- If the water level in the tank is too low for the probe to detect, the product will stop spraying automatically;
- To start spraying again, simply press the humidifier switch (⊕)

About Charging

- This product is a rechargeable fan with an input Voltage/Current of 5V = 2000mA;
- Before using the product, please ensure it is fully charged. The red light will flash while charging and stay on when fully charged. Charging takes about 4.5 hours. It's important not to exceed 8 hours of charging time to prevent battery damage and prolong product life;
- On a full charge, the product can be used for 2 to 6.5 hours depending on the selected fan speed.

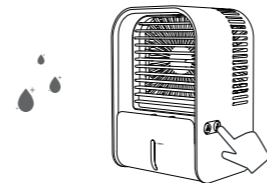
Instructions

①



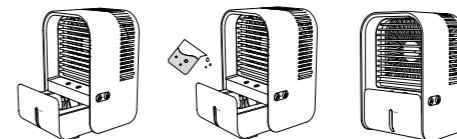
- To turn on the fan function, simply click the fan switch. Adjust the direction of the wind by moving the blade window up and down.

②



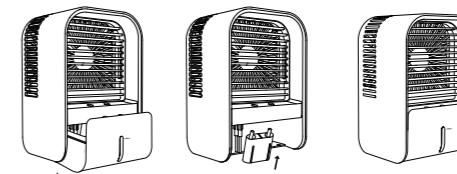
- Click the humidifier switch to switch to the humidifying function. (⊕)

Adding water to the product



- Pull out the water tank.
- Pour water into the tank (Tap water is recommended).
- Close the water tank securely.

Replacing the Cotton Swab



- Take apart the water tank.
- Insert the cotton swab at an angle.
- Close the water tank securely.

Product Parameters

Item Name	HomePro Aircooler	Battery Capacity	4000 mA/h
Item Number	LJQ-122	Spray Volume	50-60L/h (Dual Spray)
Voltage/Current	5V=2000mA	Material	ABS, PC, Silicone
Power	6.5W	Power Port	Type-C USB Cabel
Item Size	131x105x192mm	Water tank Capacity	330ml

Attention (▲)

- Please ensure the product is fully charged before use;
- Verify the voltage compatibility with your equipment before use;
- Avoid exposing the product to direct sunlight or using it in environments with water mist, moisture, dirt, or high temperatures. Keep the product away from fire sources to prevent the risk of fire or explosion;
- Do not disassemble, modify, or use the product roughly.
- For safety, do not allow children under 6 years old to use the product.
- When powering the product, use a charger with an output current of 5V/2A and a standard USB cable;
- When cleaning the fan or water tank, make sure to turn off the product and disconnect the power;
- When the water tank is filled, be mindful of the product's tilt to prevent water overflow;
- Dispose of batteries properly. Place discarded batteries in a battery recycling bin;
- Before discarding the product:
-Turn off the power.
-Remove the cover
-Take out the battery and dispose of it safely.
- If the airflow becomes weak or stops during use, please recharge the product promptly.